

Product Overview:

Shibuya Hoppmann's brand new FT-70 rigid disc centrifugal feeder is created to feed small, medium or large parts at high rates with its unique design and robust construction, and is one of the largest centrifugal feeders available on the market today. The 12" bowl depth allows for much larger parts handling than previously fed by similar feeder bowls. Product is metered into the bowl and brought out to the bowl rim where a series of qualifiers gently orient the part for transfer to various downstream inline devices. Note: Tooling is not included with this unit.

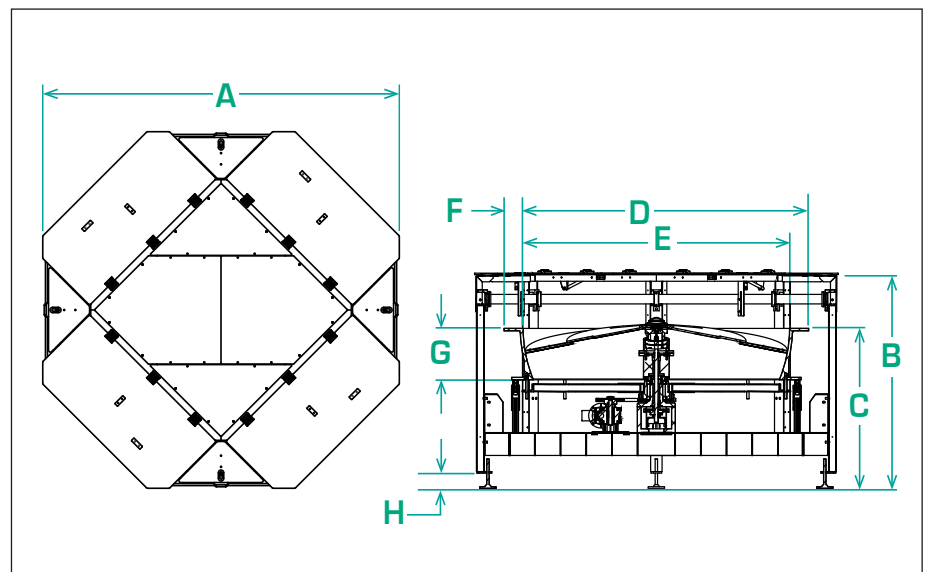
Part Number	FT702RLASA
Motor Style	AC
Motor Voltage	208-230/460V
Horsepower	3/4hp
Total Equipment Weight	1700 lbs. / 771 kg

Standard Features:

- All stainless steel exterior construction
- FDA approved ABS vacuum formed disc
- Teflon Hardcoat Anodized aluminium bowl

Available Options:

- Hinged polycarbonate covers with gas struts
- Washdown motors
- NEMA 1 encased controller



Recommended Accessories:	
Clockwise: Backup Ring	BUCWFT70SU
Counter-Clockwise: Backup Ring	BUCCF70SU

Product Specifications		ANSI	Metric
A	Overall Width	94.50"	2400.3mm
B	Overall Height	56.00" ± 1.50"	1422.4 ± 38.1mm
C	Bowl Discharge Height	42.00 ± 1.50"	1066.8 ± 38.1mm
D	Bowl Outside Diameter	80.00"	2032.0mm
E	Bowl Inside Diameter	70.00"	1778.0mm
F	Rim Width	5.00"	127.0mm
G	Bowl Depth	12.25"	311.2mm
H	Level Foot Adjustment	3.58" ± 1.50"	90.9 ± 38.1mm