



Product Overview:

Shibuya Hoppmann's FT-15-AC autoclavable centrifugal feeder meets the stringent demands of pharmaceutical feeding applications and is ideally suited to efficiently feed and orient small, sterile parts. The delivery rate varies from moderate to high speeds depending on part characteristics. The FT-15-AC is engineered to interface with Shibuya Hoppmann prefeeders, accumulating conveyors and assembly equipment.

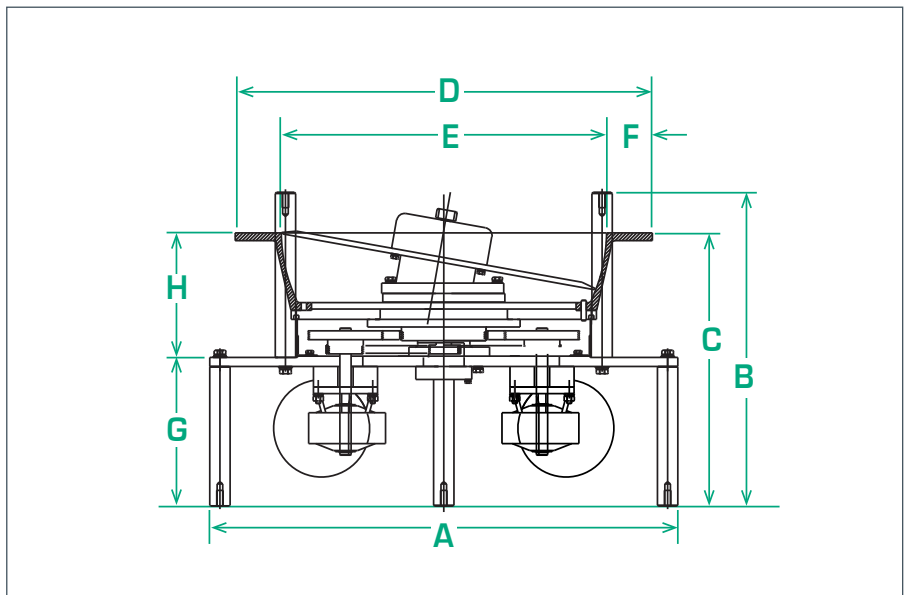
| Part Number | FT152RLAAA |
|------------------------|------------------|
| Motor Style | AC |
| Motor Voltage | 230/460V |
| Horsepower | 1/5 hp |
| Total Equipment Weight | 150 lbs. / 70 kg |

Standard Features:

- 316L stainless steel bowl and center discs
- Totally enclosed drive
- Quick disassembly of bowl and disc

Available Options

- Polycarbonate covers
- Dual motor drive system
- NEMA 1 encased controller
- Washdown motor(s)



| Product Specifications | ANSI | Metric |
|------------------------|----------------|------------|
| A Frame Height | 23.00" | 585mm |
| B Overall Height | 15.90" | 403mm |
| C Discharge Height | 14.00" ± 1.00" | 356 ± 25mm |
| D Bowl Outer Diameter | 20.50" | 521mm |
| E Bowl Inner Diameter | 16.00" | 406mm |
| F Rim Width | 2.25" | 57mm |
| G Base Height | 7.16" | 182mm |
| H Bowl Top Plate | 6.00" | 153mm |