



### Product Overview:

The standard FS-20 scallop feeder is designed to feed and orient bottles and other cylindrical parts with the use of urethane scallops. Parts are radially oriented and gently qualified in the scallop pockets by means of sweeps, wipers, pneumatic and/or electric devices depending on specific product characteristics. Oriented parts are discharged and carried away by various downstream in-line devices. Note: Tooling is not included with this unit.

Part Number	FS201RLDSA	FS201RLASA
Motor Style	DC	AC
Motor Voltage	90V	230/460V
Horsepower	1/3hp	1/3hp
Total Equipment Weight	400 lbs. / 181 kg	

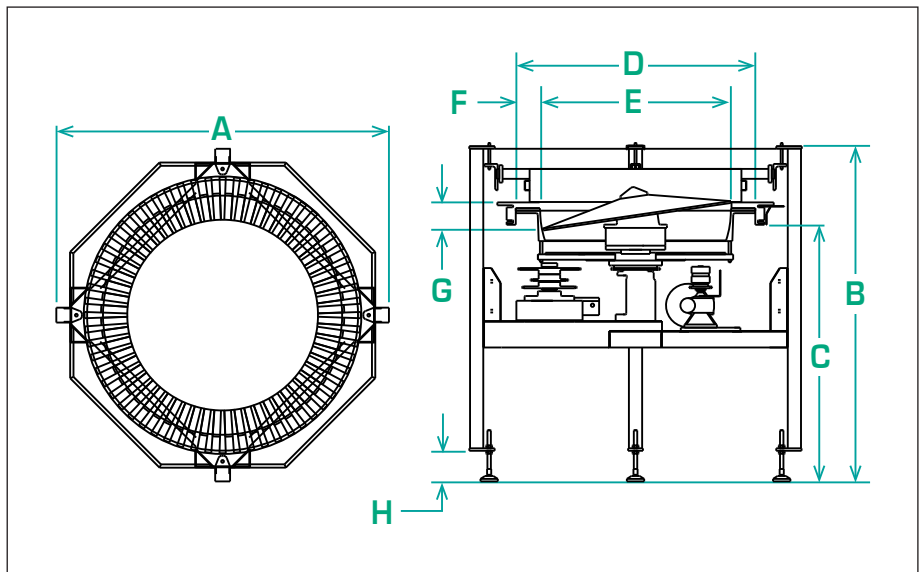
### Standard Features:

- All stainless steel exterior construction
- FDA approved ABS vacuum formed disc
- Teflon Hardcoat Anodized aluminium bowl
- Air clutch
- Hinged polycarbonate cover with safety interlocks
- Backup Ring

### Available Options:

- Washdown motor(s)
- NEMA 1 encased controller

\*Scallops - please contact Shibuya Hoppmann for more information.



Product Specifications		ANSI	Metric
A	Outside Diameter	40.00"	1016.0mm
B	Overall Height	42.00"	1067.0mm
C	Bowl Discharge Height	32.25"	819.2mm
D	Bowl Outside Diameter	25.50"	648.0mm
E	Bowl Inside Diameter	20.25"	514.0mm
F	Rim Width	2.63"	67.0mm
G	Bowl Depth	3.36"	85.3mm
H	Level Foot Adjustment	5.00" ± 2.5"	127.0 ± 64mm